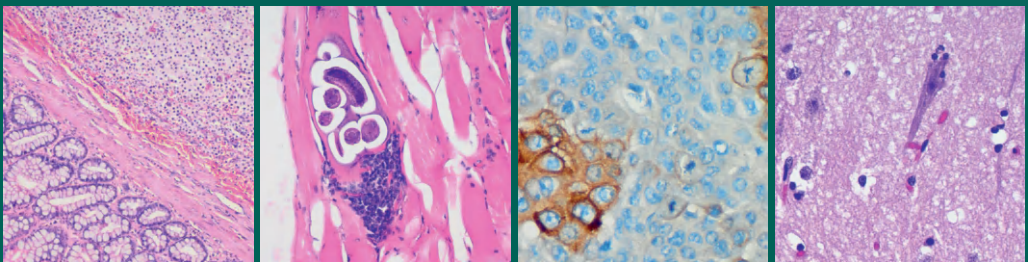


Elvira Gagniuc

Computational Analysis of Microscopy Images

A Veterinary Medicine Perspective



Contents

1	Computational Analysis in Veterinary Medicine	1
1.1	Introduction	2
1.2	Overview of Veterinary Medicine	2
1.3	The Role of Computational Analysis	3
1.4	Importance of Microscopy in Veterinary Diagnostics	4
1.5	Historical Perspective and Recent Advances	5
1.6	Objectives and Scope	5
2	Fundamentals of Microscopy in Veterinary Pathology	7
2.1	Introduction	8
2.2	Basics of Light Microscopy	8
2.3	Sample Preparation and Staining Techniques	9
2.4	Overview of Different Microscopy Techniques	10
2.4.1	Brightfield Microscopy	10
2.4.2	Phase-Contrast Microscopy	11
2.4.3	Fluorescence Microscopy	11
2.4.4	Confocal Microscopy	11
2.4.5	Electron Microscopy	12
2.5	Microscopy Applications in Veterinary Pathology	12
2.6	Challenges and Limitations in Veterinary Microscopy	13
3	Computational Image Analysis	15
3.1	Introduction	16
3.2	Basics of Digital Imaging and Image Acquisition	16
3.2.1	Consistency in Image Acquisition	17
3.3	Key Concepts in Image Processing	18
3.3.1	Image Processing vs Veterinary Pathology	19
3.4	Tools and Software for Image Analysis	21
3.5	Integration of Computational Analysis in Veterinary Practice	23
3.5.1	Anatomical and Physiological Variability	24

3.5.2	Standardization of Veterinary Imaging Data	24
3.5.3	The Balance Between Cost and Benefit.	25
3.6	Python vs Veterinary Practice	25
4	Image Preprocessing Techniques	27
4.1	Introduction	28
4.2	Noise Reduction Methods	29
4.2.1	Gaussian Blur.	29
4.2.2	Median Filtering.	32
4.2.3	Anisotropic Diffusion	34
4.2.4	Nonlocal Means	35
4.3	Contrast Enhancement and Histogram Equalization	40
4.3.1	Contrast Enhancement	41
4.3.2	Histogram Equalization	43
4.3.3	Adaptive Histogram Equalization	45
4.3.4	Histogram Equalization Using Skimage	48
4.4	Image Normalization and Calibration	50
4.4.1	Image Normalization	51
4.4.2	Image Calibration.	53
4.5	Image Resizing and Cropping	56
4.5.1	Image Cropping	56
4.5.2	Image Resizing.	57
4.6	Data Augmentation for Microscopy Images	60
4.6.1	A Concrete Example Data Augmentation	61
5	Image Segmentation and Feature Extraction.	65
5.1	Introduction	66
5.2	Thresholding and Edge Detection	66
5.2.1	Thresholding	67
5.2.2	Edge Detection.	69
5.3	Region-Based Segmentation Techniques.	71
5.3.1	Region Growing.	71
5.3.2	Watershed Algorithm	74
5.3.3	Preprocessing Steps for Segmentation.	76
5.4	Morphological Operations and Blob Detection.	77
5.4.1	Enhanced Edges and Dilation	78
5.4.2	Edge Detection Using Sobel Operator.	80
5.5	Texture, Shape, and Color Feature Extraction	81
5.5.1	Multiple Parameters Used as Tissue Signatures	82
6	Quantitative Image Analysis in Veterinary Medicine	87
6.1	Introduction	88
6.1.1	The Importance of Quantitative Image Analysis.	89
6.1.2	Applications in Veterinary Pathology	89
6.1.3	Challenges and Future Directions	89

6.2	Counting Cells and Structures	90
6.2.1	Automated Cell Nuclei Counting in Histology	90
6.2.2	Automated Cell Counting with Size-Based Filtering	93
6.3	Measuring Morphological Parameters	96
6.3.1	Quantitative Analysis of Nuclei Size and Distribution	97
6.3.2	Micrometer-Scale Quantitative Analysis of Nuclei	100
6.4	Pixel-to-Micrometer Conversion in Histological Image Analysis	102
6.5	Quantifying Staining Intensity and Distribution	104
6.5.1	Staining Intensity and Distribution	105
6.5.2	Description of Results	108
6.5.3	Interpretation and Importance in Comparative Analysis	109
6.6	Statistical Analysis of Quantitative Data	109
6.7	Identification of Statistical Parameters	111
6.8	Description of Results	114
6.9	Applications in Disease Diagnosis and Prognosis	116
6.10	Detection of Abnormally Sized Nuclei for Malignant Tumor Identification	117
6.11	Detection of Malignant Nuclei by Filtering Inflammatory Cell Infiltrates	121
7	Machine Learning and AI in Microscopy Image Analysis	127
7.1	Introduction	128
7.2	Introduction to Machine Learning in Image Analysis	129
7.3	Convolutional Neural Networks (CNNs) for Image Classification	130
7.3.1	Training a Deep Learning Model for Automated Detection of Tumors	132
7.4	Transfer Learning and Pretrained Models	139
7.4.1	An AI-Powered Histological Image Classification Using a Pretrained Model	140
7.5	Deep Learning Architectures for Veterinary Pathology	143
7.6	Explainable AI and Model Interpretability	145
7.7	Case Studies: AI-Powered Diagnostics in Veterinary Medicine	146
	Appendices	149
	References	161
	Index	171